

JOB NAME: _____

LOCATION: _____

ENGINEER: _____

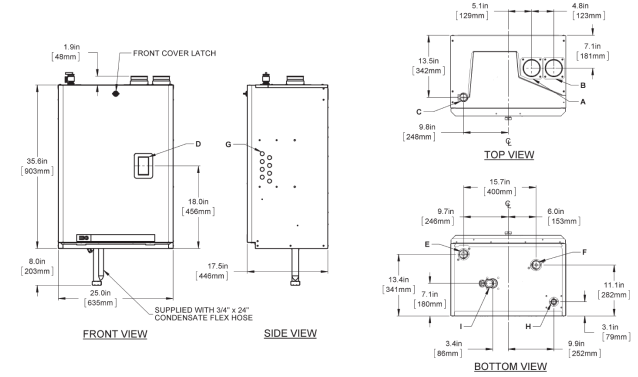
WHOLESALER: _____

CONTRACTOR: _____

FUEL: Natural Gas Propane

BTUH/INPUT: _____

BTUH/OUTPUT: _____



Description	199 / 260
A Exhaust Outlet	3" Schedule 40
B Combustion Air	3" Schedule 40
D Touch Screen Display	2-1/4" x 4"
C Relief Valve Connection	3/4" NPT - F
E Water Outlet	1-1/2" NPT - M
F Water Inlet	1-1/2" NPT - M
G Knock-Outs (8)	1/2"
H Gas Inlet	3/4" NPT - F
I Condensate Outlet	3/4" Hose

Specifications	SL 35 -199	SL 45 - 260
CSA Input (Natural Gas or Propane *) - MBH	35 - 199	45 - 260
CSA Input (Natural Gas or Propane *) - KW	10.3 - 58.3	13.2 - 76.2
CSA Output - MBH	32.7 - 181.3	43.2 - 239
CSA Output - KW	7.7 - 43	12.7 - 70.0
A.F.U.E	95%	95%
Min gas pressure (Nat. Gas or Propane) - inch w.c.	5	5
Max gas pressure (Nat. Gas or Propane) - inch w.c.	14	14
Power (120Vac/60Hz) - Watts @ full fire - Watts	92	127
Weight (empty) - lbs/Kg +	151 / 69	162 / 74
Pressure vessel water content - USG/Liters	5 / 19	5 / 19
Max boiler flow rate - USgpm	25	25
Min boiler flow rate - USgpm	6	6
Max operating pressure - psig	30	30
Min water pressure - psig	8	8
Approved installation altitude - ASL	0 - 12,000 ft	0 - 12,000 ft
Ambient temperature - Low (°F/°C)	32°F / 0°C	32°F / 0°C
Ambient temperature - High (°F/°C)	122°F / 50°C	122°F / 50°C
Max relative humidity (non-condensing)	90%	90%
Min water Temperature (°F/°C)	34°F / 1°C	34°F / 1°C
Max water Temperature (electronic-limit) (°F/°C)	190°F / 88°C	190°F / 88°C
Max water Temperature (mechanical hi-limit) (°F/°C)	200°F / 93°C	200°F / 93°C
Max ΔT - supply / return (electronic fence)	40°F	40°F
Maximum equivalent vent length each side 3"	200'	200'
Maximum equivalent vent length each side 4" (Natural Gas or Propane)	200'	200'
Air intake options: either direct vent or indoor supply		

Surface	Distance from combustible surfaces	Recommended distance for installation and service
Front	2"	24"
Rear	0"	0"
Left Side	1"	4" (min. for non-combustible surface)
Right Side	1"	4" (min. for electrical connections)
Top	2"	6" (for vent connection)
Bottom	0"	12" (for condensate trap)

Exhaust pipe size	Maximum equivalent length
Sched.40; Rigid PPs	
3"	200'
4"	200'
90° long sweep elbow	Allow 5' equivalent
90° vent elbow	Allow 8' equivalent
45° elbow	Allow 3' equivalent
PP's 87-90° elbows	Allow 8' equivalent
Flexible PPs	
3" Flexible (SL 35-199)	160' (max) lineal x 1.2 = equivalent
3" Flexible (SL 45-260)	60' (max) lineal x 3.33 = equivalent
4" Flexible	160' (max) lineal x 1.2 = equivalent

On Natural Gas models: to maintain the full firing rate at elevations over 2000' use 3' Flue Gas Exhaust piping and 3' Combustion Air Piping or replace the burner with Part# 180-016 Knitted Metal Burner

Boiler Head Loss					
Flow rate (gpm)	6	10	15	20	25
Head loss @ flow (ft wc)	2.0'	3.5'	5.5'	8.0'	13.0'

Pressure vessel head loss

